



SNAP Access: Improving Seniors' Health Outcomes

Reduce Nursing Home & Hospital Admissions by Meeting Basic Needs

The 2017 Maryland Food Access and
Nutrition Network (MFANN) Conference

October 24, 2017

@BeneDataTrust

#SDOH #SeniorsOnSNAP #SIE4Health





INDIVIDUAL IMPACT

Comprehensive
Application
Assistance



SYSTEMS IMPACT

Simple Benefits
Access




SOCIAL IMPACT

Cost-Effective Strategies
for Improving Lives,
Communities and the
Economy

SERVICE DELIVERY MODEL



A woman with short dark hair, wearing a white cardigan over a purple top, is sitting on a wooden chair outdoors. She has a thoughtful expression, looking upwards and to the right. The background is a blurred outdoor setting with greenery and a wooden fence. A large green circle is overlaid on the left side of the image, containing text.

**I'm looking forward
to help with the food
and not having to worry
about asking my children
if they can help me...**

**I really appreciate
your help.**

-Ms. J, age 66

The Problem: Seniors Basic Needs Aren't Met

What Makes Us Healthy



What We Spend On Being Healthy



88% of US healthcare expenditures are spent on **medical care** alone, but:

- **10%** is attributed to *medical care*
- **70%** is attributed to *behavioral and socio-economic factors*

The Research Collaboration

Benefits Data Trust

The Johns Hopkins School of Nursing

The Hilltop Institute at UMBC

Maryland Department of Human Services

Maryland Department of Health

Robert Wood Johnson Foundation

([Links to the original research: the first on hospitals and the second on nursing homes](#))



JOHNS HOPKINS
SCHOOL of NURSING



Robert Wood Johnson
Foundation



MARYLAND
Department of Health



The Study Hypothesis

Access to **Supplemental Nutrition Assistance Program (SNAP)** food assistance

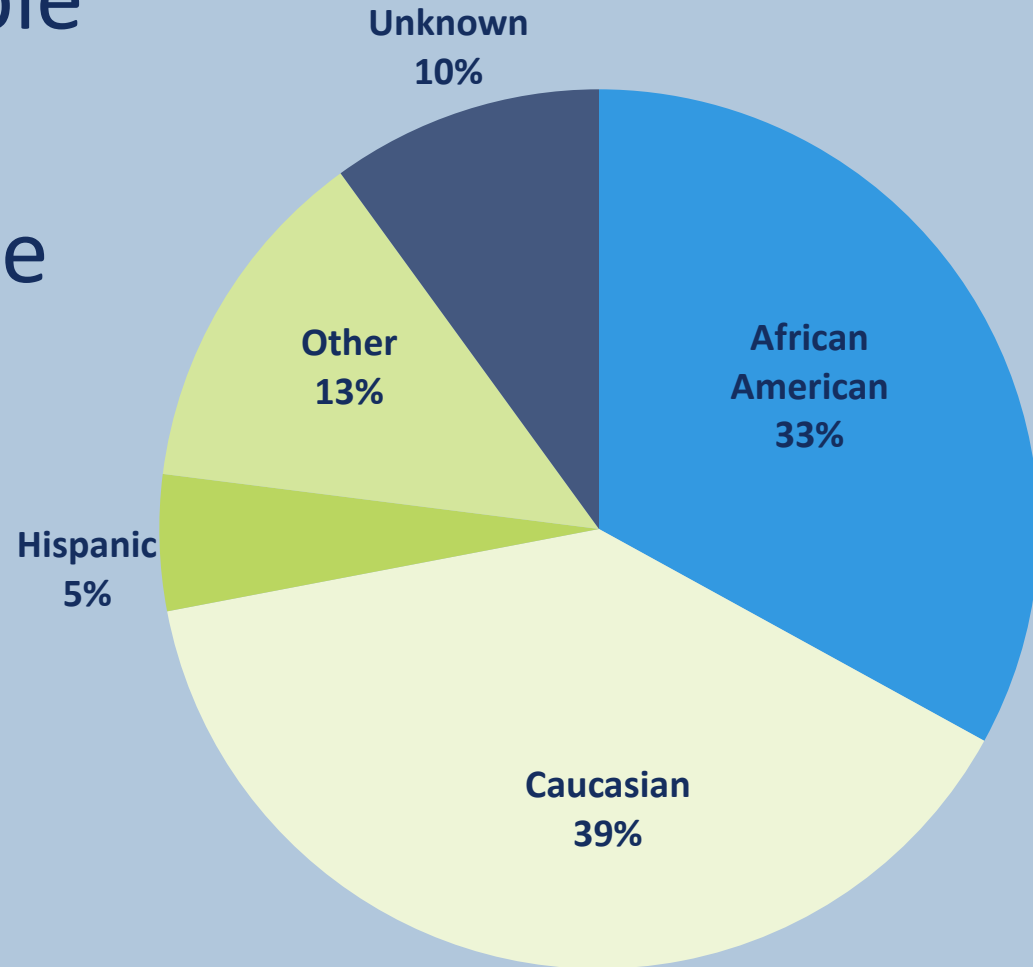


Improved health **outcomes** and reduces healthcare **costs**



The Study Population

- **68,956** dual-eligible adults 65+
- Nearly **70%** female
- **At least 2** chronic conditions



Deep Poverty

Average annual income approximately

\$5,800





The Findings: Seniors on SNAP

After just one year...

Odds of nursing home admission: **-23%**

Odds of hospital admission: **-14%**

Shorter stays ***in both settings*** if admitted

Benefits Utilization

- **47%** SNAP enrollment
 - Average *monthly* benefit of **\$117**
- **21%** LIHEAP enrollment
 - Average *annual* benefit of **\$339**

What We Can Save

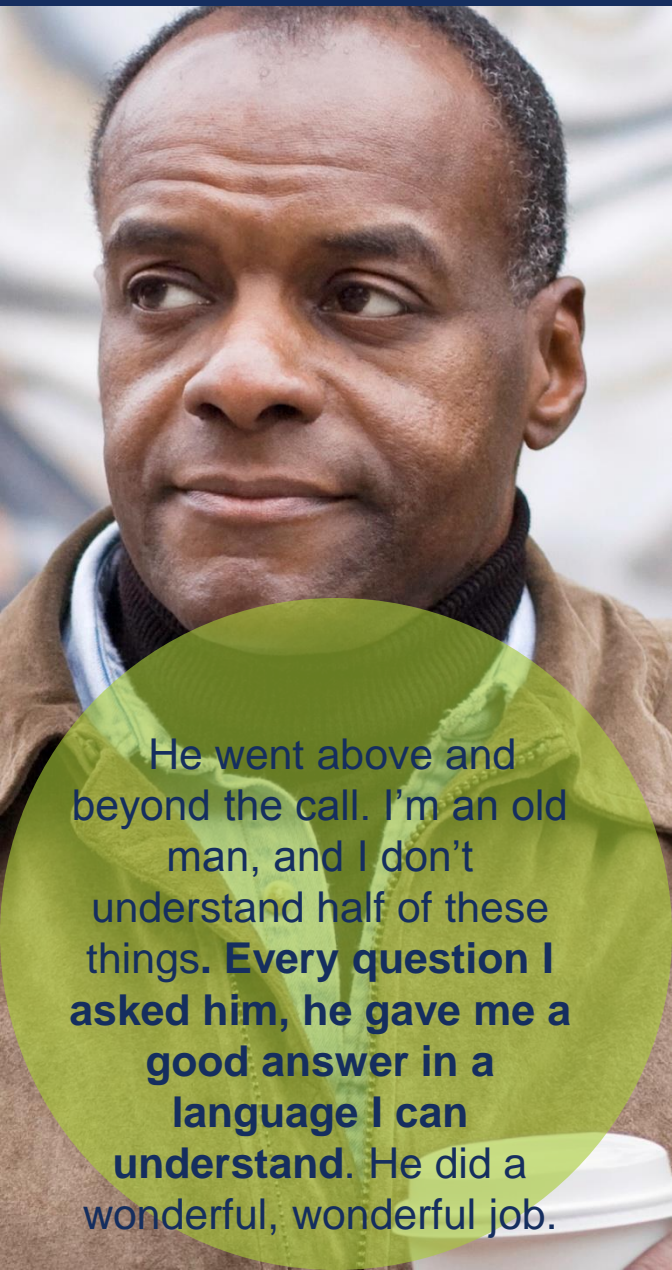
If all non-SNAP participants from sample were enrolled:

- **\$34 million** savings from nursing homes
- **\$19 million** savings from hospitalizations



Northwestern
University

Research Implications for *Low-Income Seniors*

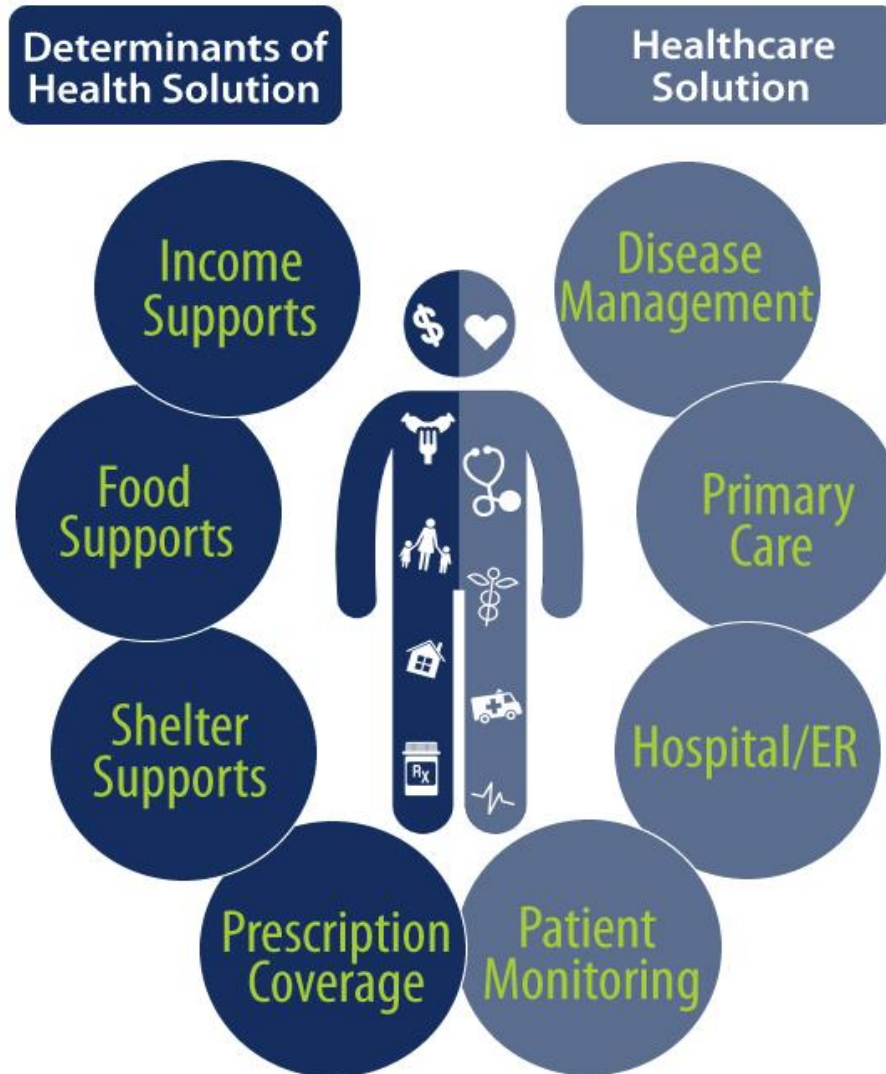


- Over **5.5 million** eligible low-income seniors not enrolled in SNAP
- Seniors average SNAP amount: **\$1,400/** year

He went above and beyond the call. I'm an old man, and I don't understand half of these things. **Every question I asked him, he gave me a good answer in a language I can understand.** He did a wonderful, wonderful job.



Comprehensive Solutions





Connect with Us!

Katherine Heflin, MS

Program Manager

Maryland Benefits Center at
Benefits Data Trust



Email:

kheflin@bdtrust.org

Twitter:

@BeneDataTrust

@KatherineHeflin

LinkedIn:

BDT:

<https://www.linkedin.com/company/1855250/>

Katherine:

<https://www.linkedin.com/in/katherine-heflin-15662731/>

Citations

Our New Studies Cited:

- Samuels, L. et al. “Does the Supplemental Nutrition Assistance Program Affect Hospital Utilization Among Older Adults? The Case of Maryland.” *Population Health Management*. <http://online.liebertpub.com/doi/pdfplus/10.1089/pop.2017.0055>
- Szanton, et al. “Food assistance is associated with decreased nursing home admissions for Maryland’s dually eligible older adults.” *BMC Geriatrics*. <http://bmgeriatr.biomedcentral.com/articles/10.1186/s12877-017-0553-x>

Other Sources Cited:

- Bengle, Rebecca, et al. “Food Insecurity is associated with Cost-Related Medication Non-Adherence in Community-Dwelling, Low-Income Older Adults in Georgia,” *Journal of Nutrition for the Elderly*, 29.2 (2010): 170-191.
- Berkowitz, Seth, et al. “Food Insecurity and Metabolic Control among U.S. Adults with Diabetes,” *Diabetes Care*, 36.10 (2013): 3093-3099.
- Bradley, E., et al., (2011). Health and Social Services Expenditures: Associations with Health Outcomes, *BMJ Quality & Safety*. 20(10), 826-831.
- Bradley, E., et al (2016). Variation in Health Outcomes: The Role of Spending on Social Services, Public Health, and Health Care, 2000-09, *Health Affairs* 35(5), 760-768.
- Health Impact Project, “Case Study: Low Income Energy Assistance Program,” Accessed at <http://www.healthimpactproject.org/resources/case-study-low-income-energy-assistance-program>
- Robert Wood Johnson Foundation, “Health Care’s Blind Side: The Overlooked Connection between Social Needs and Good Health,” December 2011. Accessed at http://www.rwjf.org/content/dam/farm/reports/surveys_and_polls/2011/rwjf71795
- Sokol, Michael, et al. “Impact of Medication Adherence on Hospitalization Risk and Healthcare Cost,” *Medical Care*, 43.6 (2005): 521-530.
- Seligman, Hilary K, et al. “Food Insecurity is associated with Chronic Disease among Low-Income NHANES Participants,” *Journal of Nutrition*, 140.2 (2010): 304-310.